

North West Farnham Residents Association

Home	Documents	Issues	Planning	Photographs	Links
Committee Minutes	Newsletters	AGM Minutes	Constitution		

Newsletter No 49

Annual General Meeting

Wednesday June 16th 8 pm
St Francis Hall (off Three Stiles Road)

Followed by

Local Councillor's Forum

Pat Frost (Surrey County Council) and Lucinda Fleming (Waverley Borough Council, Farnham Town Council)

Dear Member

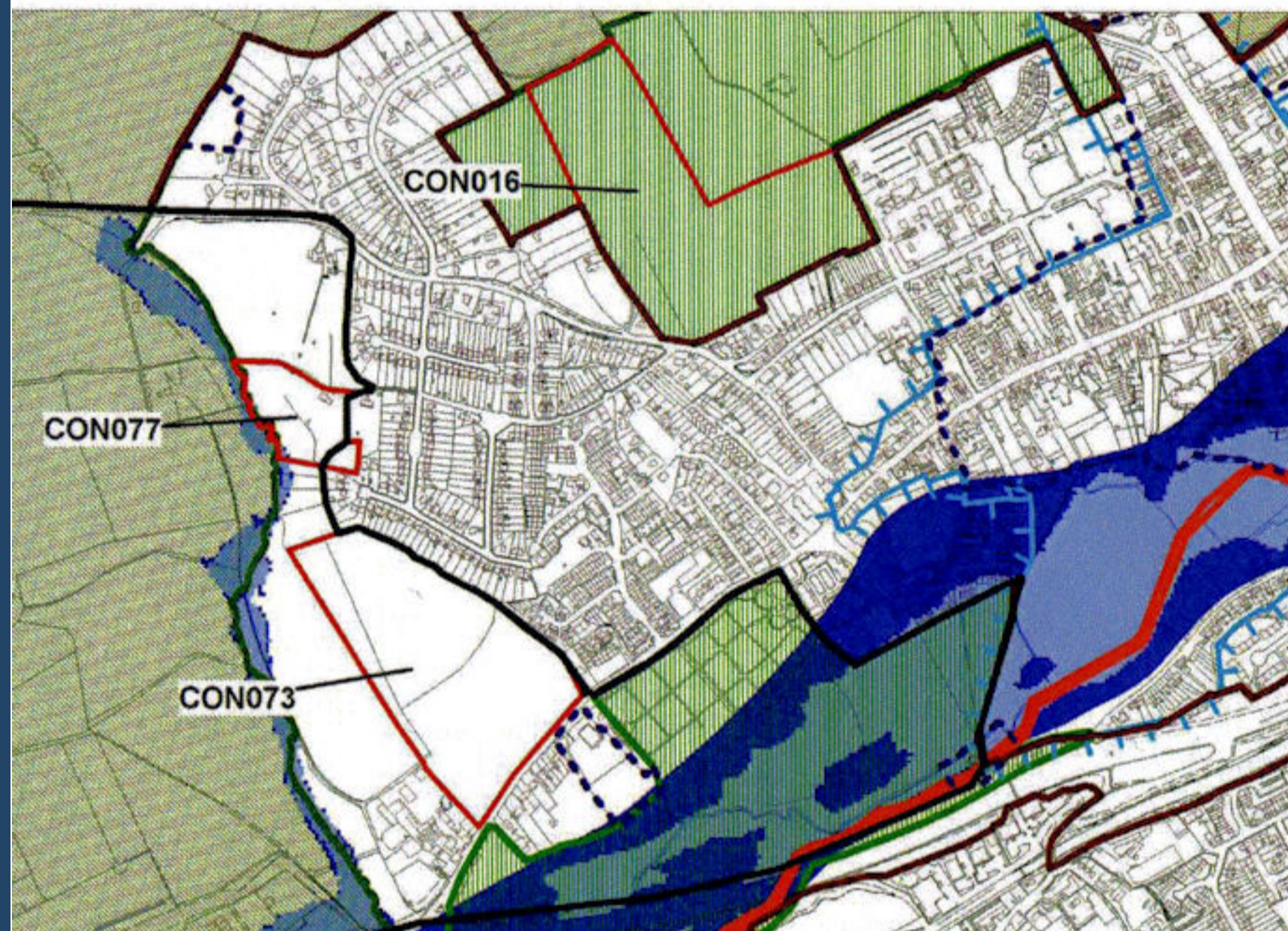
Annual General Meeting

The Annual General Meeting will be held on Wednesday 16th of June and we will be welcoming the Town Mayor, Mr. John Ward and our local councillors Mrs. Pat Frost and Mrs. Lucinda Fleming. The latter have kindly agreed to answer questions from the residents and I am sure that we shall have the usual lively and informative debate. Anyone who would like to come but needs some extra help or transport can phone our secretary, Harriet Ellis, on 01252 714480.

Chair and Committee Report

Since I took office the Association has been continuing to look at ways to improve our communication with the members. We wanted to report any developments to you as quickly as we could but even more importantly we wanted to hear from you what you would like us to do. We have launched our new website which has been running for a few months. We are really keen to provide a good service to you all so, if you haven't done so already, we would like you all to log on and try the site for yourself either at home, at the Library or in the locality office in South Street. We would like to express our thanks to Mr. Keith Miller who designed and monitors the site and who has been incredibly responsive to any requests for changes. The site address is www.nwfarnham.org.uk

Other work has carried on as usual as we continue to try to monitor changes which affect our area and improve things where we are able. There have been several developments during the last few months which will require monitoring over the coming year. Waverley is in the process of producing a Local Development Framework or LDF which will be the basis for planning and development in Farnham and the rest of Waverley in the next years. They have been preparing for this by carrying out a Strategic Housing Land Availability Assessment which includes land within the main settlements but also identifies potential land if the Government requires more housing than can be provided by infill. Since our area is so close to the Town centre and has a large area of green fields included in it, there have been several sites within North West Farnham which have been identified as potential development areas. The map below shows them as identified in their consultation report.



The areas designated as CON077, CON073 and CON016 are stated to be suitable for a total of 405 new dwellings in an area which is considered, in the case of CON016 (the College Fields), of strategic visual importance and both CON073 and CON077 affecting the view from the entrance of the Town on the west side from the Coxbridge roundabout. We have put in an objection to their inclusion during the consultation phase but we won't know until the publication of the LDF what their designation will be. If they are included it does not mean that they will be developed immediately, but that they are available for development so we will have to watch the planning applications very closely over the next few years or so.

Community Speed Watch and Traffic Matters

There is always a problem with traffic in Farnham, as was said in the previous newsletter it is either going too fast or not going at all. There has been another accident at the top of Crondall Lane and Speed Watch is still in operation in that area. They continue to record two or three cases an hour of excessive speed. Hopefully our presence there helps to keep some of the speed down. We are hoping to review this activity during the AGM but if we decide that it should continue in some form we will need more volunteers to help spread the load. The new speed indicator signs suffered a little in the cold weather but the one sign is still working at the time of going to press.

Please contact the Speed Watch coordinator, Tony Ostime, on 01252 721312 if you have any views to express or feel you can spare some time.

Planning Matters

There is a great deal of Greenfield Space in our Area and we would like to keep it that way so we need to be aware of any planned developments in sensitive areas. The website provides a link to the planning applications in Waverley and if you click on the Castle Ward applications it will give you a list of all the applications in our area. For those of you without a computer, word of mouth works well so if you have any information about an application near to you, please contact any member of the committee and let us know and then we can circulate it more widely to other members who may wish to be involved.

Farnborough airport consultation is set to begin mid-May as TAG is appealing the decision by Rushmoor not to allow a large increase in flights from the airport. If you have any questions or further observations to make, please contact our website or the Airport committee member Graham Leach on 01252 722009.

Bishops Meadow

A group of Farnham residents have got together to buy some of the Water Meadow Land in an area called Bishops Meadow. The Committee felt that the Association could donate some money to this worthy cause especially since the meadow is very close to our area. If you have a view on this please contact our committee member Barry Edwards on 01252 721834 or come along to the AGM meeting and have your say there.

I am looking forward to seeing you all on June 16th.

Penny Marriott
May 2010.

Click [Here](#) to see the previous Newsletter.

[Return to the top](#)